



A GUIDE TO YOUR EYE DROPS

# LOOK INSIDE FOR HELPFUL INFORMATION ABOUT YOUR PRESCRIPTION

Please see Indication and Important Safety Information inside. Please see accompanying full Prescribing Information or visit [https://www.rxabbvie.com/pdf/alphagan\\_pi.pdf](https://www.rxabbvie.com/pdf/alphagan_pi.pdf).

 **Allergan**<sup>™</sup>  
an AbbVie company

# ABOUT YOUR NEW PRIMARY OPEN-ANGLE GLAUCOMA TREATMENT

# WHAT ARE EYE PRESSURE AND GLAUCOMA?

## IN THIS GUIDE, YOU'LL FIND INFORMATION ABOUT

Primary open-angle glaucoma.....3	Dosing .....6
ALPHAGAN® P (brimonidine tartrate ophthalmic solution) 0.1% .....4	Treatment tips.....7
	Savings .....9



### IMPORTANT SAFETY INFORMATION CONTRAINDICATIONS

**Neonates and Infants (under the age of 2 years):** ALPHAGAN® P is contraindicated in neonates and infants (under the age of 2 years).

**Hypersensitivity Reactions:** ALPHAGAN® P is contraindicated in patients who have exhibited a hypersensitivity reaction to any component of this medication in the past.

### INDICATIONS AND USAGE

ALPHAGAN® P (brimonidine tartrate ophthalmic solution) 0.1% or 0.15% is an alpha-adrenergic receptor agonist indicated for the reduction of elevated intraocular pressure (IOP) in patients with open-angle glaucoma or ocular hypertension.

**Please see additional Important Safety Information throughout.**  
**Please see accompanying full Prescribing Information or visit [https://www.rxabbvie.com/pdf/alphagan\\_pi.pdf](https://www.rxabbvie.com/pdf/alphagan_pi.pdf).**

**Primary open-angle glaucoma is a disease that damages your eye's optic nerve and can lead to blindness. Your optic nerve connects your eye to your brain, allowing you to see**

Normally, your eyes have fluid in them that keeps them nourished and healthy. When this fluid is not drained properly, it can cause pressure inside the eye to rise slowly. **High eye pressure can cause primary open-angle glaucoma, damaging the optic nerve and, ultimately, causing vision loss.**

Many times, primary open-angle glaucoma has no warning signs. Loss of vision can happen so slowly over time that you may not notice it getting worse until the condition is at an advanced stage.

## HELPFUL INFORMATION

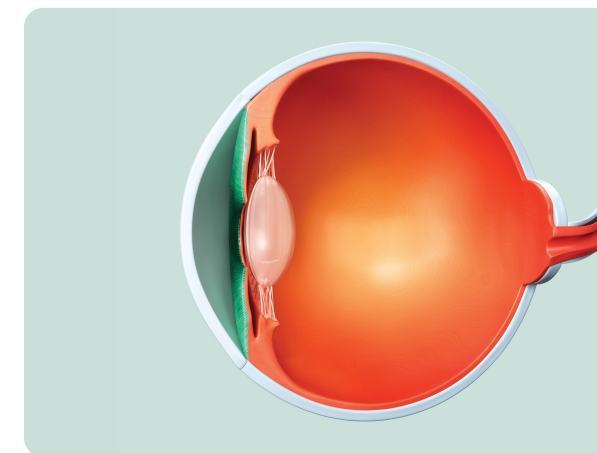
- Pressure inside of your eye may also be referred to as intraocular pressure (IOP) by your doctor
- High eye pressure is also known as ocular hypertension

Primary open-angle glaucoma is a condition that will need ongoing treatment in order to slow or prevent vision loss.

Once your vision is lost, it cannot be recovered. This is why it is important to use your eye drops as prescribed and to continue using them as directed by your doctor.

### IMPORTANT SAFETY INFORMATION (CONT'D) WARNINGS AND PRECAUTIONS

**Potential of Vascular Insufficiency:** ALPHAGAN® P may potentiate syndromes associated with vascular insufficiency. ALPHAGAN® P should be used with caution in patients with depression, cerebral or coronary insufficiency, Raynaud's phenomenon, orthostatic hypotension, or thromboangiitis obliterans.

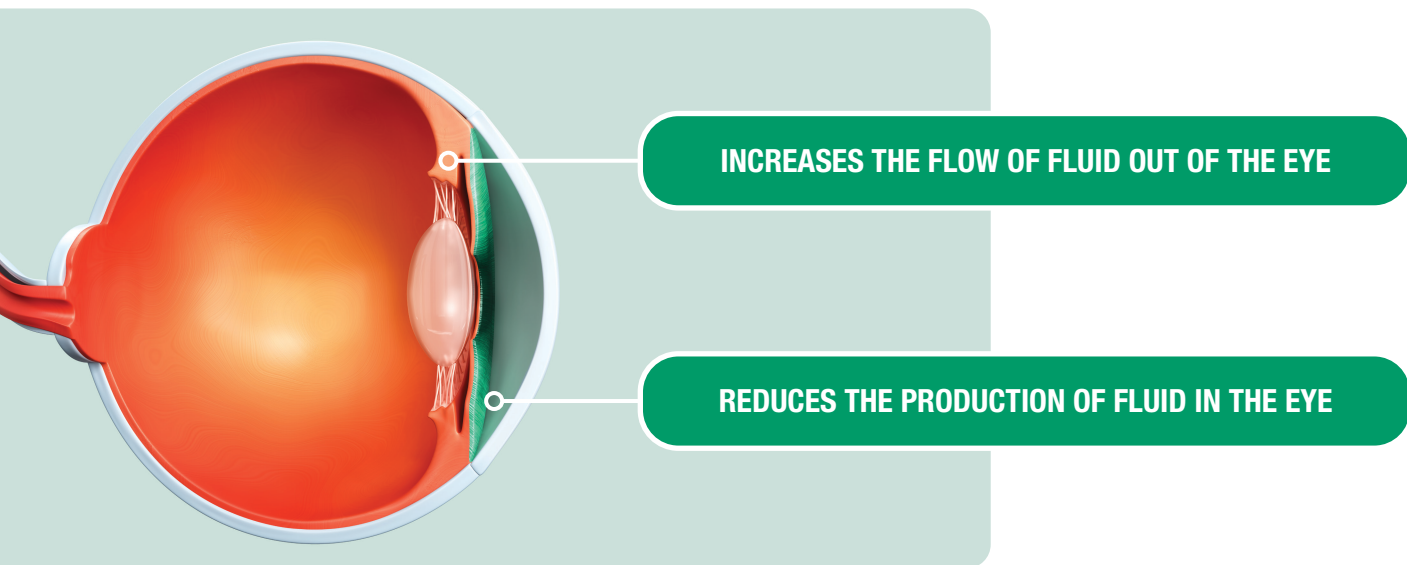


**Alphagan P 0.1%**  
(brimonidine tartrate ophthalmic solution) 0.1%

# ALPHAGAN® P 0.1% IS A TREATMENT THAT LOWERS YOUR EYE PRESSURE

While there is no cure for glaucoma, treatments like ALPHAGAN® P 0.1% work to help reduce high eye pressure, also called IOP, in patients with primary open-angle glaucoma or ocular hypertension

Although the exact way that ALPHAGAN® P 0.1% may work is unknown, it is thought to reduce eye pressure in 2 ways:



## IMPORTANT SAFETY INFORMATION (CONT'D) WARNINGS AND PRECAUTIONS (CONT'D)

**Severe Cardiovascular Disease:** Although brimonidine tartrate ophthalmic solution had minimal effect on the blood pressure of patients in clinical studies, caution should be exercised in treating patients with severe cardiovascular disease.

Please see additional Important Safety Information throughout.

Please see accompanying full Prescribing Information or visit [https://www.rxabbvie.com/pdf/alphagan\\_pi.pdf](https://www.rxabbvie.com/pdf/alphagan_pi.pdf).

# WHAT TO EXPECT WHEN USING ALPHAGAN® P 0.1%

Like other prescription medications, you may experience side effects while using ALPHAGAN® P 0.1%. The most common side effects include:



**Eye allergies**



**Eye redness  
(known as hyperemia)**



**Itchy eyes**

Talk to your doctor if you experience problems with these or any other side effects.

## IMPORTANT SAFETY INFORMATION (CONT'D) WARNINGS AND PRECAUTIONS (CONT'D)

**Contamination of Topical Ophthalmic Products After Use:** There have been reports of bacterial keratitis associated with the use of multiple-dose containers of topical ophthalmic products. These containers had been inadvertently contaminated by patients who, in most cases, had a concurrent corneal disease or a disruption of the ocular epithelial surface.

## HELPFUL INFORMATION

ALPHAGAN® P 0.1% was tested and found to be safe and effective in clinical trials before being approved by the FDA.

- In clinical trials, 10% to 20% of patients experienced eye allergies, eye redness, and itchy eyes

FDA=US Food and Drug Administration.



**Alphagan P 0.1%**  
(brimonidine tartrate ophthalmic solution) 0.1%

# MAKE SURE TO USE YOUR EYE DROPS AS YOUR DOCTOR PRESCRIBED

Using your medication consistently is important to help lower your eye pressure. Controlling eye pressure is important in treating your primary open-angle glaucoma



The recommended dose of ALPHAGAN® P 0.1% is 1 drop in the affected eye(s) 3 times a day, about 8 hours apart



ALPHAGAN® P 0.1% may be used alone or with other eye drops to lower eye pressure for patients with primary open-angle glaucoma or ocular hypertension



If you use more than one type of topical eye drop, they should be applied at least 5 minutes apart

## IMPORTANT SAFETY INFORMATION (CONT'D) DRUG INTERACTIONS

**Antihypertensives/Cardiac Glycosides:** Because ALPHAGAN® P may reduce blood pressure, caution in using drugs such as antihypertensives and/or cardiac glycosides with ALPHAGAN® P is advised.

Please see additional Important Safety Information throughout.

Please see accompanying full Prescribing Information or visit [https://www.rxabbvie.com/pdf/alphagan\\_pi.pdf](https://www.rxabbvie.com/pdf/alphagan_pi.pdf).

# TREATMENT TIPS

Making your eye drops a part of your daily routine can help you keep up with treatment



Keep your eye drops in the same place so you always know where they are



Set alarms and reminders on clocks, cell phones, and computers to help you



Put a reminder note to yourself in a prominent location, such as on your refrigerator



Primary open-angle glaucoma does not go away, but it can get worse; using your prescription eye drops can help lower your high eye pressure



Follow your doctor's directions, refill your prescription regularly, and continue using your eye drops, even if you feel like you no longer have any symptoms

You can find more treatment tips by scanning the QR code or going online to [alphaganp.com](http://alphaganp.com).



## IMPORTANT SAFETY INFORMATION (CONT'D) DRUG INTERACTIONS (CONT'D)

**CNS Depressants:** Although specific drug interaction studies have not been conducted with ALPHAGAN® P, the possibility of an additive or potentiating effect with CNS depressants (alcohol, barbiturates, opiates, sedatives, or anesthetics) should be considered.

**Alphagan P 0.1%**  
(brimonidine tartrate ophthalmic solution) 0.1%

# GETTING STARTED WITH ALPHAGAN® P 0.1%

When you receive the medication prescribed by your doctor, you are getting:



The medication your doctor chose to treat your condition based on their clinical judgment



The same product from the same manufacturer each month



Access to patient support programs for eligible commercially-insured patients



To ensure that you pick up the correct prescription at the pharmacy, make sure the bottle is labeled “ALPHAGAN® P 0.1%” and has a purple cap.

## IMPORTANT SAFETY INFORMATION (CONT'D) DRUG INTERACTIONS (CONT'D)

**Tricyclic Antidepressants:** Tricyclic antidepressants have been reported to blunt the hypotensive effect of systemic clonidine. It is not known whether the concurrent use of these agents with ALPHAGAN® P in humans can lead to resulting interference with the IOP-lowering effect. Caution is advised in patients taking tricyclic antidepressants, which can affect the metabolism and uptake of circulating amines.

Please see additional Important Safety Information throughout.  
Please see accompanying full Prescribing Information or visit [https://www.rxabbvie.com/pdf/alphagan\\_pi.pdf](https://www.rxabbvie.com/pdf/alphagan_pi.pdf).

# SOME PATIENTS MAY BE ABLE TO SAVE ON THEIR PRESCRIPTION

Eligible commercially-insured patients can enroll in the At Your Service (AYS) Savings Program\* by:



Scanning the QR code or going to [savewithays.com](https://savewithays.com)

OR

TEXTING  
“SAVINGS”  
TO 72428†

OR

CALLING  
**1-833-DIAL-AYS**  
(1-833-342-5297)

## Savings Card



**Alphagan P 0.1%**  
(brimonidine tartrate ophthalmic solution) 0.1%

Visit [savewithays.com](https://savewithays.com) to receive your card today!

Not an actual card.

For more information, talk to your doctor, visit [savewithays.com](https://savewithays.com), or call At Your Service Customer Service at **1-833-Dial-AYS (1-833-342-5297)**.

\*Program valid for patients with commercial prescription insurance coverage and a valid prescription for ALPHAGAN® P 0.1%. Maximum savings limits apply; patient out-of-pocket expense will vary depending on insurance coverage. Offer not valid for patients enrolled in Medicare, Medicaid, or any other federal, state, or government-funded healthcare program. See At Your Service Savings Program Terms, Conditions, and Eligibility Criteria at [savewithays.com](https://savewithays.com).

†AYS Alerts: Msg and data rates apply. Msg frequency depends on user. Reply HELP for help; reply STOP to cancel. Consent to texts not required to sign up for offer. Visit [savewithays.com](https://savewithays.com) to view our Mobile Terms & Conditions and Privacy Policy.

## IMPORTANT SAFETY INFORMATION (CONT'D) DRUG INTERACTIONS (CONT'D)

**Monoamine Oxidase Inhibitors:** Monoamine oxidase (MAO) inhibitors may theoretically interfere with the metabolism of brimonidine and potentially result in an increased systemic side effect such as hypotension. Caution is advised in patients taking MAO inhibitors, which can affect the metabolism and uptake of circulating amines.



# USE ALPHAGAN® P 0.1% DAILY TO HELP LOWER HIGH EYE PRESSURE

Your doctor has prescribed ALPHAGAN® P 0.1% to lower the high eye pressure associated with your ocular hypertension or primary open-angle glaucoma



**ALPHAGAN® P 0.1%** is a proven, FDA-approved medication used 3 times a day about 8 hours apart, every day, to lower your high eye pressure



The At Your Service (AYS) Savings Program is available for eligible commercially-insured patients



Scan the QR code or visit **savewithays.com** to see if you're eligible

## IMPORTANT SAFETY INFORMATION (CONT'D) ADVERSE REACTIONS

Adverse reactions occurring in approximately 10% to 20% of the subjects receiving brimonidine ophthalmic solution (0.1% to 0.2%) included: allergic conjunctivitis, conjunctival hyperemia, and eye pruritus. Adverse reactions occurring in approximately 5% to 9% included: burning sensation, conjunctival folliculosis, hypertension, ocular allergic reaction, oral dryness, and visual disturbance.

You are encouraged to report negative side effects of prescription drugs to the FDA. Visit **www.fda.gov/medwatch** or call 1-800-FDA-1088. If you are having difficulty paying for your medicine, AbbVie may be able to help. Visit **abbvie.com/myabbvieassist** to learn more.

Please see additional Important Safety Information throughout.  
Please see accompanying full Prescribing Information  
or visit [https://www.rxabbvie.com/pdf/alphagan\\_pi.pdf](https://www.rxabbvie.com/pdf/alphagan_pi.pdf).

**Alphagan P 0.1%**  
(brimonidine tartrate ophthalmic  
solution) 0.1%