



A GUIDE TO YOUR EYE DROPS

LOOK INSIDE FOR HELPFUL INFORMATION ABOUT YOUR PRESCRIPTION

Please see Indication and Important Safety Information inside. Please see accompanying full Prescribing Information or visit https://www.rxabbvie.com/pdf/lumigan_pi.pdf.

 **Allergan**[™]
an AbbVie company

ABOUT YOUR NEW PRIMARY OPEN-ANGLE GLAUCOMA TREATMENT

IN THIS GUIDE, YOU'LL FIND INFORMATION ABOUT

Primary open-angle glaucoma.....3	Dosing6
LUMIGAN® (bimatoprost ophthalmic solution) 0.01%4	Treatment tips.....7
	Savings9



IMPORTANT SAFETY INFORMATION

Do not use LUMIGAN® 0.01% if you are allergic to any of the ingredients.

LUMIGAN® (bimatoprost ophthalmic solution) 0.01% can cause increased brown coloring of the iris, which may be permanent. LUMIGAN® 0.01% can cause darkening of the eyelid skin and eyelashes, which may be reversible after treatment is stopped. The long-term effects of increased dark coloring are not known.

INDICATION

LUMIGAN® (bimatoprost ophthalmic solution) 0.01% is used for the reduction of high eye pressure, also called intraocular pressure (IOP), in people with open-angle glaucoma or ocular hypertension.

Please see additional Important Safety Information throughout. Please see accompanying full Prescribing Information or visit https://www.rxabbvie.com/pdf/lumigan_pi.pdf.

WHAT ARE EYE PRESSURE AND GLAUCOMA?

Primary open-angle glaucoma is a disease that damages your eye's optic nerve and can lead to blindness. Your optic nerve connects your eye to your brain, allowing you to see

Normally, your eyes have fluid in them that keeps them nourished and healthy. When this fluid is not drained properly, it can cause pressure inside the eye to rise slowly. **High eye pressure can cause primary open-angle glaucoma, damaging the optic nerve and, ultimately, causing vision loss.**

Many times, primary open-angle glaucoma has no warning signs. Loss of vision can happen so slowly over time that you may not notice it getting worse until the condition is at an advanced stage.

HELPFUL INFORMATION

- Pressure inside of your eye may also be referred to as intraocular pressure (IOP) by your doctor
- High eye pressure is also known as ocular hypertension

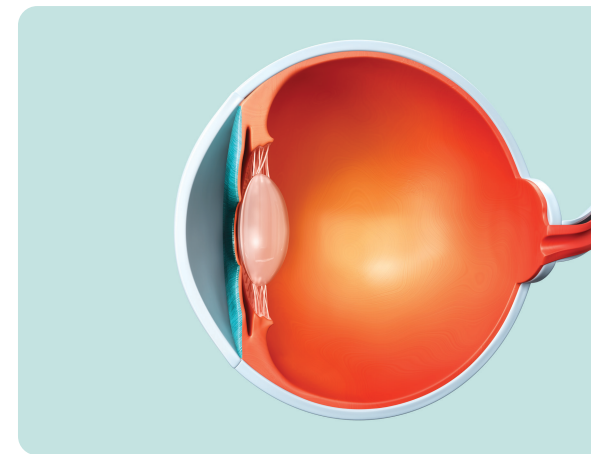
Primary open-angle glaucoma is a condition that will need ongoing treatment in order to slow or prevent vision loss.

Once your vision is lost, it cannot be recovered. This is why it is important to use your eye drops as prescribed and to continue using them as directed by your doctor.

IMPORTANT SAFETY INFORMATION (CONT'D)

LUMIGAN® 0.01% may slowly increase the growth and thickness of eyelashes, which are usually reversible after treatment is stopped.

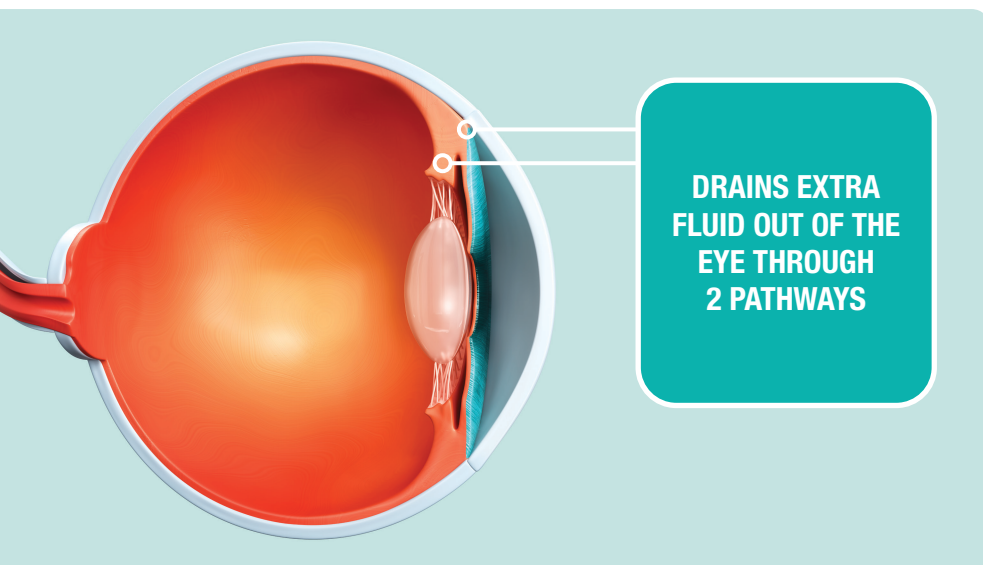
Prostaglandin analogs, including bimatoprost, have been reported to cause inflammation inside the eye. Also, treatment with LUMIGAN® 0.01% may make existing inflammation worse.



LUMIGAN® 0.01% IS A TREATMENT THAT LOWERS YOUR EYE PRESSURE

While there is no cure for glaucoma, treatments like LUMIGAN® 0.01% work to help reduce high eye pressure, also called IOP, in patients with primary open-angle glaucoma or ocular hypertension

Although the exact way that LUMIGAN® 0.01% may work is unknown, it is thought to reduce eye pressure by draining extra fluid through 2 parts of the eye.



IMPORTANT SAFETY INFORMATION (CONT'D)

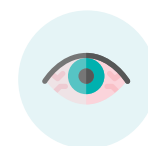
Macular edema (swelling of the macula), including cystoid macular edema, has been reported during treatment with bimatoprost ophthalmic solution. LUMIGAN® 0.01% should be used with caution in patients without a natural lens, in patients with a torn posterior lens capsule who have an artificial lens implant, or in patients with known risk factors for macular edema.

Please see additional Important Safety Information throughout.

Please see accompanying full Prescribing Information or visit https://www.rxabbvie.com/pdf/lumigan_pi.pdf.

WHAT TO EXPECT WHEN USING LUMIGAN® 0.01%

Like other prescription medications, you may experience side effects while using LUMIGAN® 0.01%. The most common side effects include:



**Eye redness
(known as hyperemia)**



**Increased
eyelash growth**



Itchy eyes

Talk to your doctor if you experience problems with these or any other side effects.

IMPORTANT SAFETY INFORMATION (CONT'D)

Avoid allowing the tip of the dispensing bottle to touch the eye, anything around the eye, fingers, or any other surface to avoid contamination by common bacteria known to cause eye infections. Using contaminated solutions can cause serious damage to the eye and loss of vision.

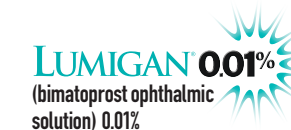
If you have eye surgery, eye trauma or infection, or develop any eye reactions, immediately consult with your physician about continuing the use of LUMIGAN® 0.01%.

HELPFUL INFORMATION

Before being approved by the FDA, prescription medications must be tested in clinical trials to prove their effectiveness and safety. LUMIGAN® 0.01% was tested in a year-long clinical trial of 560 patients:

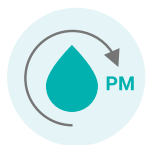
- In clinical trials, 185 of 560 patients were treated with LUMIGAN® 0.01%; the remaining patients were treated with similar medication
- Eye redness was the most common side effect and was seen in 28.6% of 185 patients treated with LUMIGAN® 0.01%
- Approximately 1.6% of 185 patients stopped therapy due to eye redness with LUMIGAN® 0.01%

FDA=US Food and Drug Administration.



MAKE SURE TO USE YOUR EYE DROPS AS YOUR DOCTOR PRESCRIBED

Using your medication consistently is important to help lower your eye pressure. Controlling eye pressure is important in treating your primary open-angle glaucoma



The recommended dose of LUMIGAN® 0.01% is 1 drop in the affected eye(s) once daily in the evening



LUMIGAN® 0.01% may be used alone or with other eye drops to lower eye pressure for patients with primary open-angle glaucoma or ocular hypertension



If you use more than one type of topical eye drop, they should be applied at least 5 minutes apart

IMPORTANT SAFETY INFORMATION (CONT'D)

LUMIGAN® 0.01% contains an ingredient that may be absorbed by and cause discoloration of soft contact lenses. If you wear contact lenses, remove them before using LUMIGAN® 0.01%. Then wait 15 minutes after using LUMIGAN® 0.01% before you put your contacts back into your eyes.

Please see additional Important Safety Information throughout.

Please see accompanying full Prescribing Information or visit https://www.rxabbvie.com/pdf/lumigan_pi.pdf.

TREATMENT TIPS

Making your eye drops a part of your daily routine can help you keep up with treatment



Keep your eye drops in the same place so you always know where they are



Set alarms and reminders on clocks, cell phones, and computers to help you



Put a reminder note to yourself in a prominent location, such as on your refrigerator



Primary open-angle glaucoma does not go away, but it can get worse; using your prescription eye drops can help lower your high eye pressure



Follow your doctor's directions, refill your prescription regularly, and continue using your eye drops, even if you feel like you no longer have any symptoms

You can find more treatment tips by scanning the QR code or going online to lumigan.com.



IMPORTANT SAFETY INFORMATION (CONT'D)

The most common side effect is eye redness. Other side effects include growth of eyelashes and itchy eyes.

LUMIGAN 0.01%
(bimatoprost ophthalmic solution) 0.01%

GETTING STARTED WITH LUMIGAN® 0.01%

When you receive the medication prescribed by your doctor, you are getting:



The medication your doctor chose to treat your condition based on their clinical judgment



The same product from the same manufacturer each month



Access to patient support programs for eligible commercially-insured patients



To ensure that you pick up the correct prescription at the pharmacy, make sure the bottle is labeled “LUMIGAN® 0.01%” and has an aqua cap.

INDICATION

LUMIGAN® (bimatoprost ophthalmic solution) 0.01% is used for the reduction of high eye pressure, also called intraocular pressure (IOP), in people with open-angle glaucoma or ocular hypertension.

Please see additional Important Safety Information throughout.

Please see accompanying full Prescribing Information or visit https://www.rxabbvie.com/pdf/lumigan_pi.pdf.

SOME PATIENTS MAY BE ABLE TO SAVE ON THEIR PRESCRIPTION

Eligible commercially-insured patients can enroll in the At Your Service (AYS) Savings Program* by:



Scanning the QR code or going to savewithays.com

OR

TEXTING
“SAVINGS”
TO 72428†

OR

CALLING
1-833-DIAL-AYS
(1-833-342-5297)

Savings Card



LUMIGAN® 0.01%
(bimatoprost ophthalmic solution) 0.01%

Visit savewithays.com to receive your card today!

Not an actual card.

For more information, talk to your doctor, visit savewithays.com, or call At Your Service Customer Service at **1-833-Dial-AYS (1-833-342-5297)**.

*Program valid for patients with commercial prescription insurance coverage and a valid prescription for LUMIGAN® 0.01%. Maximum savings limits apply; patient out-of-pocket expense will vary depending on insurance coverage. Offer not valid for patients enrolled in Medicare, Medicaid, or any other federal, state, or government-funded healthcare program. **See At Your Service Savings Program Terms, Conditions, and Eligibility Criteria at savewithays.com.**

†AYS Alerts: Msg and data rates apply. Msg frequency depends on user. Reply HELP for help; reply STOP to cancel. Consent to texts not required to sign up for offer. Visit savewithays.com to view our Mobile Terms & Conditions and Privacy Policy.

IMPORTANT SAFETY INFORMATION

Do not use LUMIGAN® 0.01% if you are allergic to any of the ingredients.

LUMIGAN® (bimatoprost ophthalmic solution) 0.01% can cause increased brown coloring of the iris, which may be permanent. LUMIGAN® 0.01% can cause darkening of the eyelid skin and eyelashes, which may be reversible after treatment is stopped. The long-term effects of increased dark coloring are not known.



USE LUMIGAN® 0.01% DAILY TO HELP LOWER HIGH EYE PRESSURE

Your doctor has prescribed LUMIGAN® 0.01% to lower the high eye pressure associated with your ocular hypertension or primary open-angle glaucoma



LUMIGAN® 0.01% is a proven IOP-lowering medication used once every evening to lower your high eye pressure



The At Your Service (AYS) Savings Program is available for eligible commercially-insured patients



Scan the QR code or visit **savewithays.com** to see if you're eligible

IMPORTANT SAFETY INFORMATION (CONT'D)

LUMIGAN® 0.01% may slowly increase the growth and thickness of eyelashes, which are usually reversible after treatment is stopped.

Prostaglandin analogs, including bimatoprost, have been reported to cause inflammation inside the eye. Also, treatment with LUMIGAN® 0.01% may make existing inflammation worse.

You are encouraged to report negative side effects of prescription drugs to the FDA. Visit **www.fda.gov/medwatch** or call 1-800-FDA-1088. If you are having difficulty paying for your medicine, AbbVie may be able to help. Visit **abbvie.com/myabbvieassist** to learn more.

Please see additional Important Safety Information throughout.
Please see accompanying full Prescribing Information
or visit https://www.rxabbvie.com/pdf/lumigan_pi.pdf.

LUMIGAN® 0.01%
(bimatoprost ophthalmic solution) 0.01%